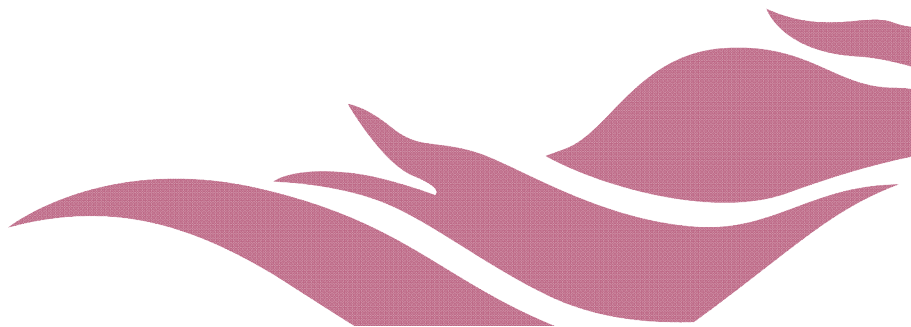


ENTERPRISE GROUP PLC

UNAUDITED FINANCIAL STATEMENTS
FOR THE PERIOD ENDED 31 MARCH 2026



ENTERPRISE GROUP PLC
UNAUDITED SEPARATE AND CONSOLIDATED STATEMENTS OF FINANCIAL POSITION
AS AT 31 MARCH 2026

(All amounts are in thousands of Ghana cedis)

	Unaudited The Company 2026	Unaudited 2025	Unaudited The Group 2026	Unaudited 2025
ASSETS				
Deferred tax assets	-	-	40,905	42,346
Investment in subsidiaries	357,758	339,413	-	-
Investment property	-	-	635,362	654,699
Property and equipment	7,549	9,355	194,675	123,382
Intangible assets	178	331	7,405	3,633
Investment securities	130,240	111,431	3,444,984	2,667,033
Related party loan	-	10,395	-	-
Inventories	-	-	2,733	3,089
Trade and other receivables	893	-	150,314	126,780
Prepayments	-	1,654	8,196	4,970
Reinsurance contract assets	-	-	184,984	221,746
Due from related party	131,819	131,819	-	-
Current tax assets	906	537	34,670	19,227
Cash and bank balances	87,673	54,835	607,239	443,742
Total assets	717,016	659,770	5,311,467	4,310,647
EQUITY AND LIABILITIES				
Capital and reserves				
Stated capital	258,886	258,886	258,886	258,886
Retained earnings	392,098	318,306	884,292	767,785
Foreign currency translation reserve	-	-	(16,264)	8,113
Contingency reserve	-	-	231,874	193,401
Statutory reserve	-	-	33,400	23,460
Equity attributable to owners of the company	650,984	577,192	1,392,188	1,251,645
Non-controlling interest	-	-	503,986	454,722
Total equity	650,984	577,192	1,896,174	1,706,367
Liabilities				
Deferred tax liabilities	-	-	95,181	138,184
Insurance contract liabilities	-	-	2,263,187	1,815,224
Policy holder retention scheme	-	-	163	147
Investment contract liabilities	-	-	462,022	325,452
Reinsurance contract liabilities	-	-	34,323	1,311
Lease liabilities	7,800	15,633	12,808	11,165
Trade and other payables	33,710	42,345	467,351	179,369
Due to re-insurers	-	-	13,997	45,703
Due to related parties	21,933	21,933	49,775	61,262
Current tax liabilities	2,589	2,667	16,486	26,463
Total liabilities	66,032	82,578	3,415,293	2,604,280
Total equity and liabilities	717,016	659,770	5,311,467	4,310,647



.....
Daniel Larbi-Tieku
Group Chief Executive Officer



.....
Fiifi Kwakye
Director

ENTERPRISE GROUP PLC
UNAUDITED SEPARATE AND CONSOLIDATED STATEMENTS OF COMPREHENSIVE INCOME
FOR THE PERIOD ENDED 31 MARCH 2026

(All amounts are in thousands of Ghana cedis)

	Unaudited The Company 2026	Audited 2025	Unaudited The Group 2026	Audited 2025
Investment income	7,763	2,870	96,699	130,781
Investment expenses	-	-	(2,058)	(1,775)
Net investment income	7,763	2,870	94,641	129,006
Insurance revenue	-	-	419,438	441,245
Insurance service expenses	-	-	(235,702)	(318,027)
Net income/(expenses) from reinsurance contracts	-	-	(59,829)	(67,367)
Insurance service result	-	-	123,907	55,851
Reinsurance income/(expenses)	-	-	(1,534)	5,882
Insurance service result after reinsurance	-	-	122,373	61,733
Net insurance finance expense	-	-	(101,751)	(4,525)
Net insurance service result	-	-	20,622	57,208
Other revenue	-	-	51,080	41,849
Other income	(897)	1,924	15,271	8,683
	(897)	1,924	66,351	50,532
Net income	6,866	4,794	181,614	236,746
Finance costs	(323)	(915)	(200)	(1,982)
Impairment charge on investments	-	-	-	7,696
Operating expenses	(320)	(3,421)	(92,550)	(81,854)
Net expenses	(643)	(4,336)	(92,750)	(76,140)
Profit before tax	6,223	458	88,864	160,606
Growth and sustainability levy	(551)	-	(4,313)	-
Income tax expense	-	(672)	(13,280)	(20,512)
Profit for the period	5,672	(214)	71,271	140,094
Other comprehensive income				
<i>Items that may be reclassified to profit or loss:</i>				
Foreign operations - translation difference	-	-	2,717	13,852
	-	-	2,717	13,852
Total comprehensive income for the period	5,672	(214)	73,988	153,946
Profit attributable to:				
Owners of the parent	5,672	(214)	52,953	84,651
Non-controlling interest	-	-	18,318	55,442
	5,672	(214)	71,271	140,093
Total comprehensive income attributable to:				
Owners of the parent	5,672	(214)	55,439	98,373
Non-controlling interest	-	-	18,549	55,573
	5,672	(214)	73,988	153,946
Earnings per share				
Basic (GH¢ per share)	0.033	0.001	0.310	0.495
Diluted (GH¢ per share)	0.033	0.001	0.310	0.495

ENTERPRISE GROUP PLC
UNAUDITED SEPARATE STATEMENT OF CHANGES IN EQUITY
FOR THE PERIOD ENDED 31 MARCH 2026

(All amounts are in thousands of Ghana cedis)

	Stated capital	Retained earnings	Total Equity
<u>Period ended 31 March 2026</u>			
Balance at 1 January 2026	258,886	386,426	645,312
<i>Total comprehensive income</i>			
Profit for the period	-	5,672	5,672
Total comprehensive income	-	5,672	5,672
<i>Transactions with owners of the company</i>			
	-	-	-
Total Transactions with owners of the company	-	-	-
Balance at 31 March 2026	258,886	392,098	650,984

Period ended 31 March 2025

Balance at 1 January 2025	258,886	318,520	577,406
<i>Total comprehensive income</i>			
Profit for the period	-	(214)	(214)
Total comprehensive income	-	(214)	(214)
<i>Transactions with owners of the company</i>			
	-	-	-
Total Transactions with owners of the company	-	-	-
Balance at 31 March 2025	258,886	318,306	577,192

ENTERPRISE GROUP PLC
UNAUDITED CONSOLIDATED STATEMENT OF CHANGES IN EQUITY
FOR THE PERIOD ENDED 31 MARCH 2026

(All amounts are in thousands of Ghana cedis)

<u>Period ended 31 March 2026</u>	Stated capital	Retained earnings	Foreign currency translation reserve	Contingency reserve	Statutory reserves	Total	Non- controlling interests	Total Equity
Balance at 1 January 2026	258,886	842,778	(18,750)	222,905	30,930	1,336,749	485,438	1,822,187
<i>Total comprehensive income</i>								-
Profit for the year	-	52,953	-	-	-	52,953	18,318	71,271
Currency translation difference	-	-	2,486	-	-	2,486	230	2,716
Total comprehensive income	-	52,953	2,486	-	-	55,439	18,548	73,987
<i>Statutory transfers</i>								
Transfer to statutory reserve	-	(2,470)	-	-	2,470	-	-	-
Transfer to contingency reserve	-	(8,969)	-	8,969	-	-	-	-
	-	(11,439)	-	8,969	2,470	-	-	-
<i>Transactions with owners of the company</i>								
	-	-	-	-	-	-	-	-
Total Transactions with owners of the company	-	-	-	-	-	-	-	-
Balance at 31 March 2026	258,886	884,292	(16,264)	231,874	33,400	1,392,188	503,986	1,896,174

ENTERPRISE GROUP PLC
UNAUDITED CONSOLIDATED STATEMENT OF CHANGES IN EQUITY
FOR THE PERIOD ENDED 31 MARCH 2026

(All amounts are in thousands of Ghana cedis)

<u>Period ended 31 March 2025</u>	Stated capital	Retained earnings	Foreign currency translation reserve	Contingency reserve	Statutory reserves	Total	Non- controlling interests	Total Equity
Balance at 1 January 2025	258,886	697,989	(5,609)	180,462	21,544	1,153,272	399,150	1,552,422
<i>Total comprehensive income</i>								-
Profit for the year	-	84,651	-	-	-	84,651	55,442	140,093
Currency translation difference	-	-	13,722	-	-	13,722	130	13,852
Total comprehensive income	-	84,651	13,722	-	-	98,373	55,572	153,945
<i>Statutory transfers</i>								
Transfer to statutory reserve	-	(1,916)	-	-	1,916	-	-	-
Transfer to contingency reserve	-	(12,939)	-	12,939	-	-	-	-
Transfer to policyholder liabilities	-	-	-	-	-	-	-	-
	-	(14,855)	-	12,939	1,916	-	-	-
<i>Transactions with owners of the company</i>								
	-	-	-	-	-	-	-	-
Total Transactions with owners of the company	-	-	-	-	-	-	-	-
Balance at 31 March 2025	258,886	767,785	8,113	193,401	23,460	1,251,645	454,722	1,706,367

ENTERPRISE GROUP PLC
UNAUDITED SEPARATE AND CONSOLIDATED STATEMENTS OF CASH FLOWS
FOR THE PERIOD ENDED 31 MARCH 2026

(All amounts are in thousands of Ghana cedis)

	Unaudited The Company 2026	Audited 2025	Unaudited The Group 2026	Audited 2025
Cash flows from operating activities				
Cash generated from operations	8,097	6,507	501,583	328,715
Interest paid on lease liabilities	(125)	(915)	1,850	393
Income tax paid	-	(6)	(15,669)	(16,185)
Growth & stabilisation levy paid	(551)	(666)	(6,378)	(4,831)
Net cash generated from operating activities	<u>7,421</u>	<u>4,920</u>	<u>481,386</u>	<u>308,092</u>
Cash flows from investing activities				
Net redemption/(acquisition) of investment securities	31,106	(22,280)	(270,561)	(248,605)
Acquisition of investment property	-	-	(468)	(104)
Acquisition of property and equipment	(26)	(2,606)	(36,208)	(30,520)
Purchase of intangible assets	-	-	(124)	(436)
Net cash generated from/ (used in) investing activities	<u>31,080</u>	<u>(24,886)</u>	<u>(307,361)</u>	<u>(279,665)</u>
Cash flows from financing activities				
Principal lease payments	(893)	(354)	(2,380)	(7,205)
Net cash used in financing activities	<u>(893)</u>	<u>(354)</u>	<u>(2,380)</u>	<u>(7,205)</u>
Net increase/ (decrease)/ in cash and cash equivalents	37,608	(20,320)	171,645	21,222
Cash and cash equivalents at beginning of period	50,065	75,155	432,981	409,528
Effects of exchange rate movements on translation of foreign operations	-	-	2,613	12,992
Cash and cash equivalents at end of the period	<u>87,673</u>	<u>54,835</u>	<u>607,239</u>	<u>443,742</u>

ENTERPRISE GROUP PLC
NOTES FORMING PART OF THE UNAUDITED SEPARATE AND CONSOLIDATED
FINANCIAL STATEMENTS FOR THE PERIOD ENDED 31 MARCH 2026

1 General Information

Enterprise Group PLC is a Company registered and domiciled in Ghana with a registered office address of Advantage Place, Mayor Road, Ridge West, PMB GP150, Accra. Enterprise Group PLC and its subsidiaries (collectively the Group) undertake the business of investments, life and non-life insurance underwriting, pensions funds management, provision of funeral services and real estate development and management.

2 Basis of Preparation

2.1 Basis of accounting and measurement

The unaudited separate and consolidated financial statements have been prepared in accordance with International Financial Reporting Standards (IFRSs) and in the manner required by the Companies Act, 2019 (Act 992).

The unaudited separate and consolidated financial statements have been prepared under the historical cost conversion, except for investment properties and equity securities measured at fair value and insurance contract liabilities which is determined by an actuarial valuation.

2.2 Functional and presentation currency

The unaudited financial statements are presented in Ghana Cedi (GH¢), which is the functional currency of the Company. All financial information presented in Ghana cedis have been rounded to the nearest thousand except when otherwise stated.

3 Summary of significant accounting policies

The principal accounting policies applied in the preparation of these unaudited financial statements are the same accounting policies used for the most recent audited financial statements of the company. These policies have been consistently applied to the periods presented.

4 Critical accounting estimates and judgements

In the preparation of the unaudited separate and consolidated financial statements, management has made judgements, estimates and assumptions that affect the application of the Group's accounting policies and the reported amounts of income, expenses, assets and liabilities. Actual results may differ from these estimates.

Estimates and underlying assumptions are reviewed on an ongoing basis. Revisions to estimates are recognized prospectively.